

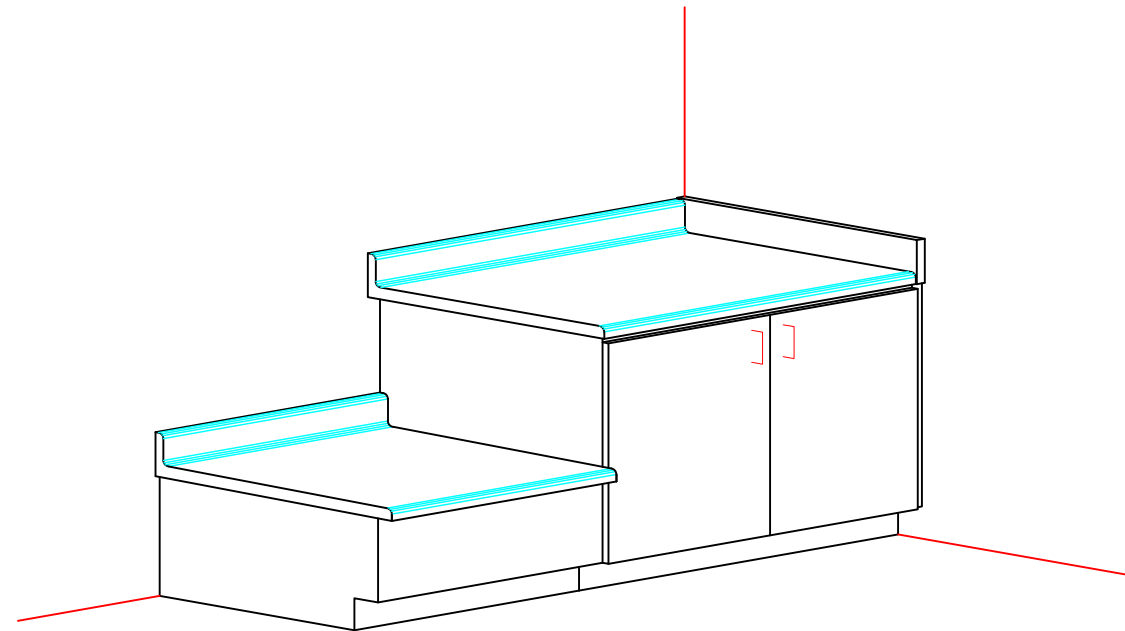
PLAN - CASEWORK

SCALE: 1/4"=1'-0"

P.LAM COUNTERTOP: WILSONART
4841-60 "DESERT ZEPHYR" MATTE

P.LAM CASEWORK: NEVAMAR
W8371T "GRAND ISLE MAPLE"

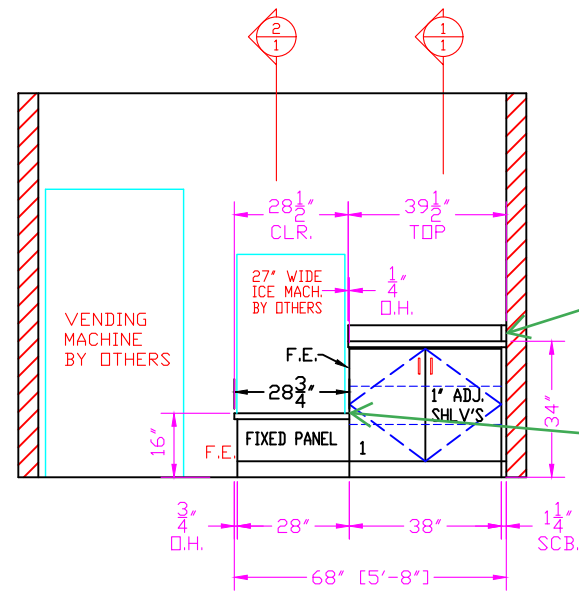
CAB. INT.: WHITE MELAMINE



ISO-VIEW CASEWORK

SCALE: 1/2"=1'-0"

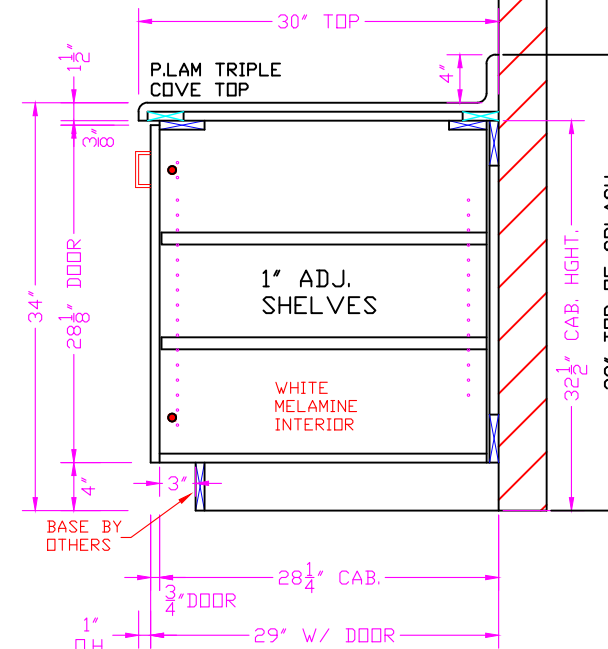
APPROVED as noted
Tony Ronsman
6/13/24



ELEVATION A/1
SCALE: 1/4"=1'-0"

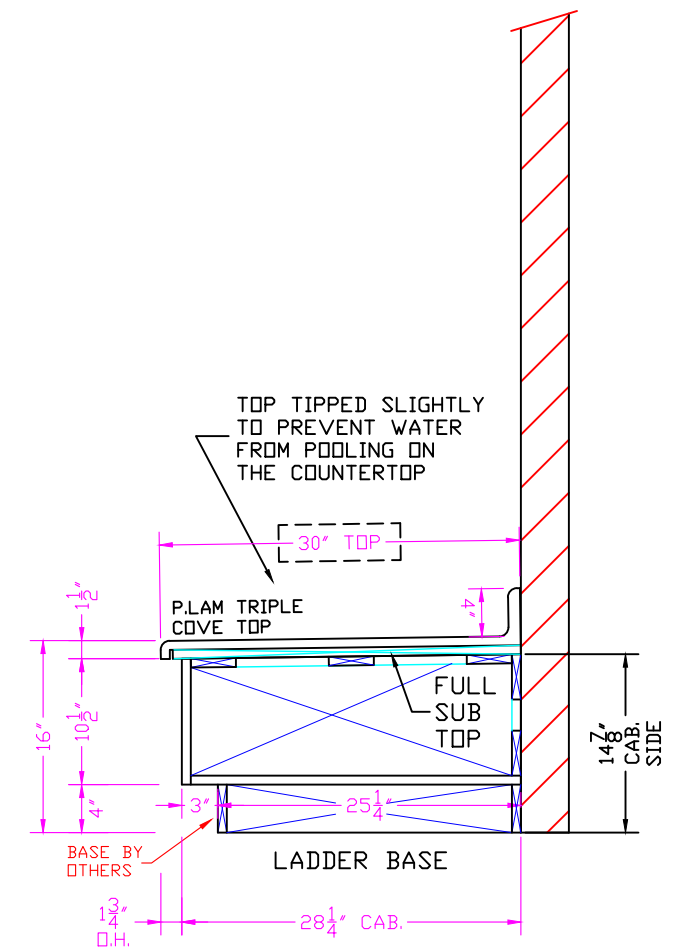
no side splash
Tony Ronsman
6/13/24

caulk countertop to cabinet
Tony Ronsman
6/13/24



SECTION 1

SCALE: 3/4"=1'-0"



SECTION 2

SCALE: 3/4"=1'-0"

NOTE: DUE TO ADA REGULATIONS, ALL COUNTERTOPS SPEC'D AT 34" HIGH WILL BE MADE 33 1/2" TO TOP OF COUNTERTOP. THIS WILL ALLOW 1/2" FOR SINK RIM. (SINKS BY OTHERS)

IF ARCHITECT / OWNER REQUIRES 34" TO TOP OF COUNTERTOP, COMMERCIAL INTERIORS WILL NOT BE LIABLE FOR ANY CHANGES AFTER INSPECTION TO MEET ADA REQUIREMENTS.

HARDWARE

(H1) HINGE & PLATE: BLUM: #73T5580 120° FULL OVERLAY SELF CLOSING (NICKEL PLATED)

(SH1) SHELF SUPPORTS: 5mm W/ STEEL PINS (TRANSPARENT)

(P1) PULLS: LIBP604DCSNC 4" (SATIN NICKEL)

CUSTOM DESIGN CASEWORK FOR:

NWTC - PUBLIC SAFETY TRAINING CENTER
GREEN BAY, WI

NO.	REVISIONS	BY	DATE
1	COLORS REVISED	C.K.	06-10-24
2	CABINETS MIRRORED	C.K.	06-13-24



1112 FLIGHT-WAY DRIVE
DE PERE, WI 54115
P.O. BOX 28497
GREEN BAY, WI 54324-8497
PHONE: (920) 336-2787 FAX: (920) 336-3528

CASEWORK DESIGNS
SECTIONS & DETAILS

DRAWN: C. KRUEGER DATE: MAY 29, 2024
SCALE: AS NOTED CAD FILE: 3661-0

SHEET:
01/01

JOB No.
3661