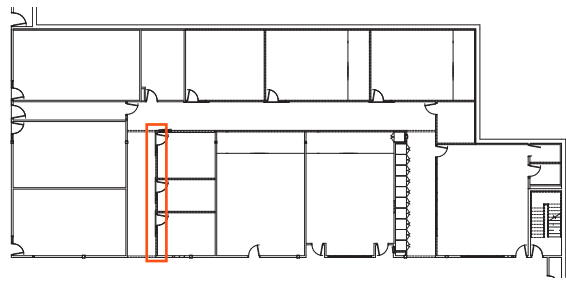


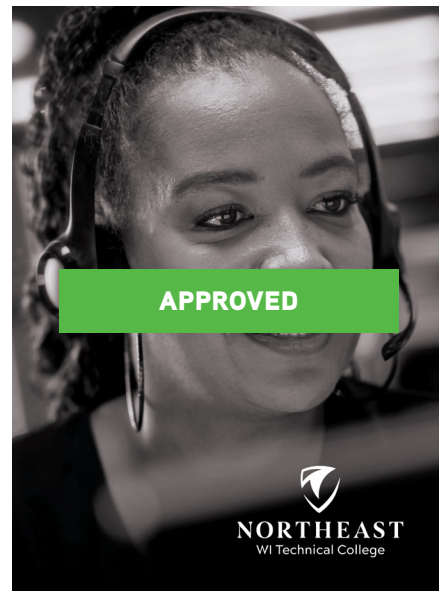
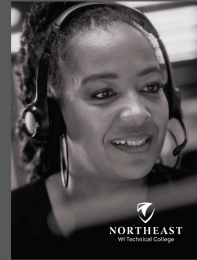
Wall C - V2



Paint Color:  
SW Peppercorn

See paint recommendation  
on last page

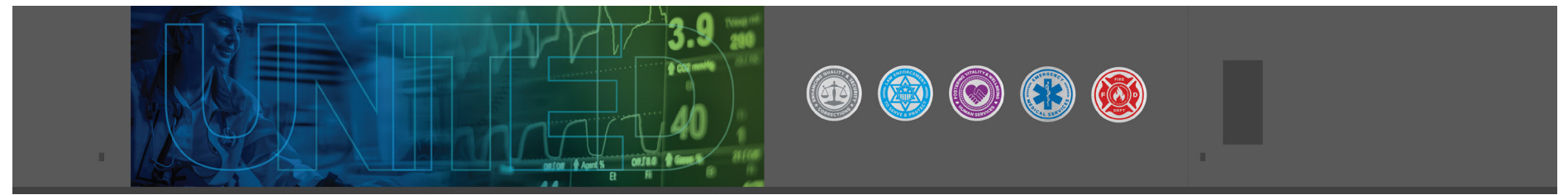
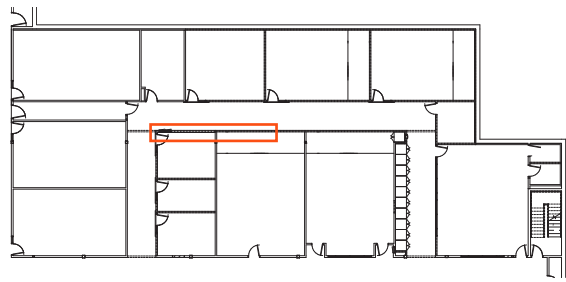
Leave blue frame around rooms



28"x38"

Design Notes: Updated  
photography to represent  
dispatch & communications

Wall D - V2



Full wall view



Integrating the public safety emblems into this space serves to extend the visual language established in the Tac House, fostering a cohesive experience across campus environments. By carrying these symbols into additional spaces, we not only honor each discipline but also create a sense of continuity and shared identity among students and faculty.

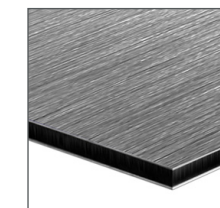
**APPROVED**



30" Dibond Emblems

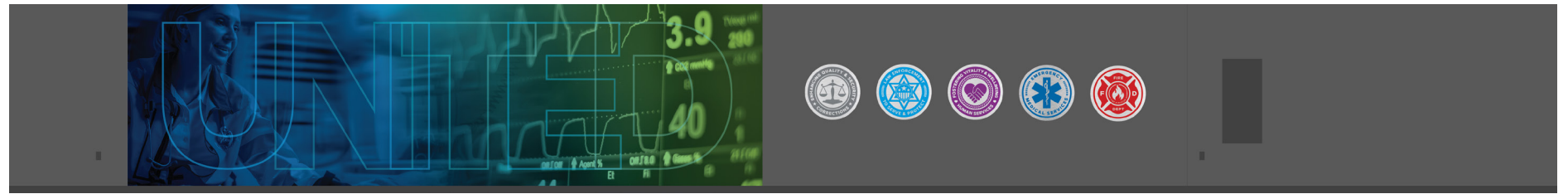
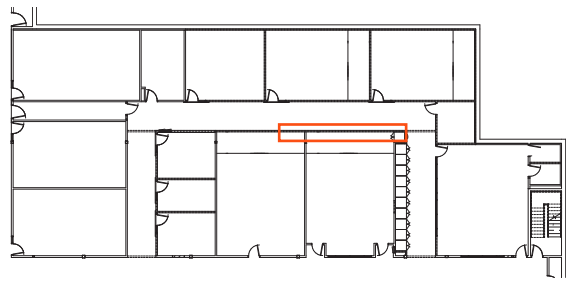


**APPROVAL NEEDED**

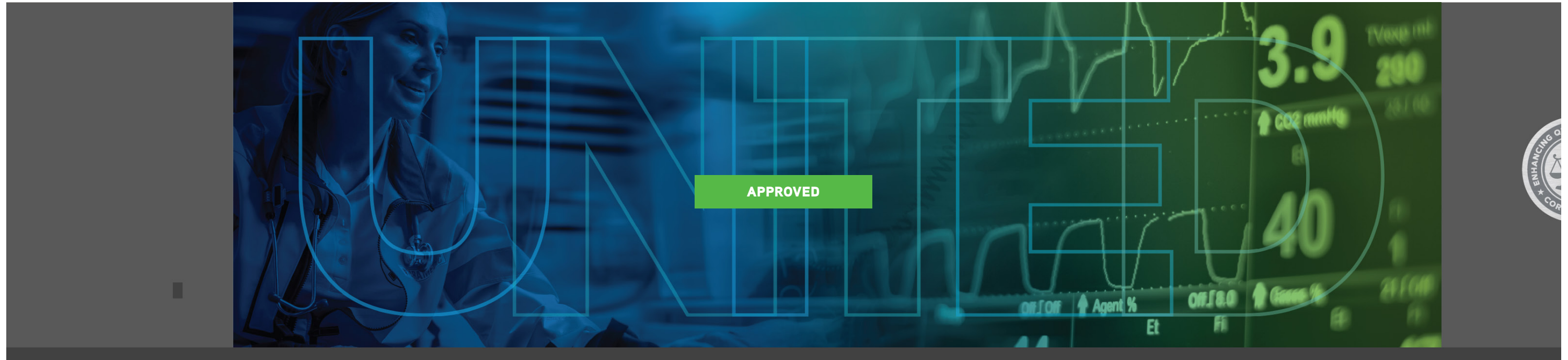


Material details for dimensional components:  
1/8" Aluminum Dibond

Wall D - V3



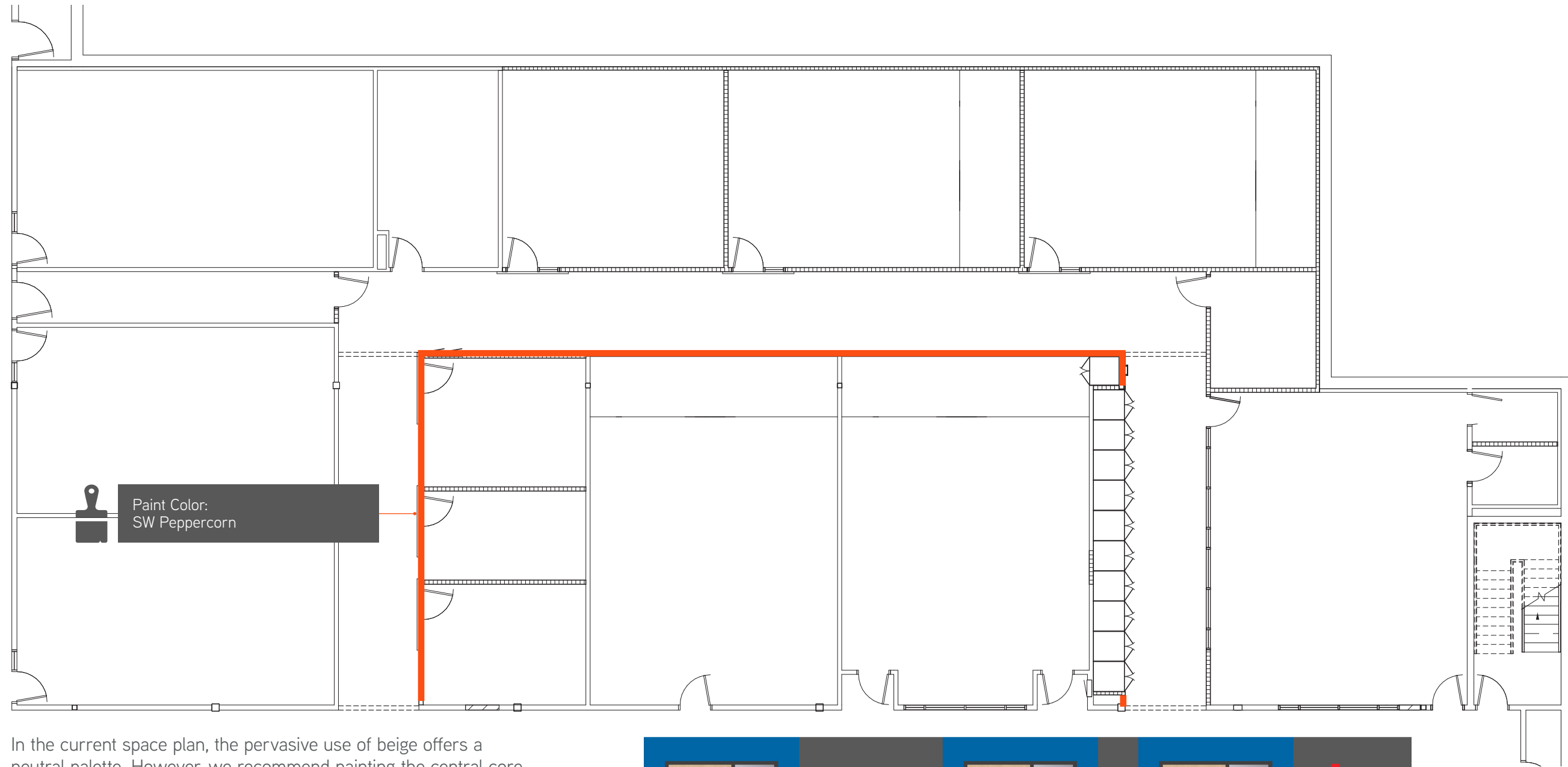
Full wall view



Design Notes: Updated photography to include vital signs monitor. Expanded color palette.

Dimensions: 345"x102.25"

# Paint Recommendation



In the current space plan, the pervasive use of beige offers a neutral palette. However, we recommend painting the central core, highlighted in orange, a Peppercorn gray to introduce depth and contrast. This would not only break the monotony of beige but also create a focal core in the space.



Leave blue framing